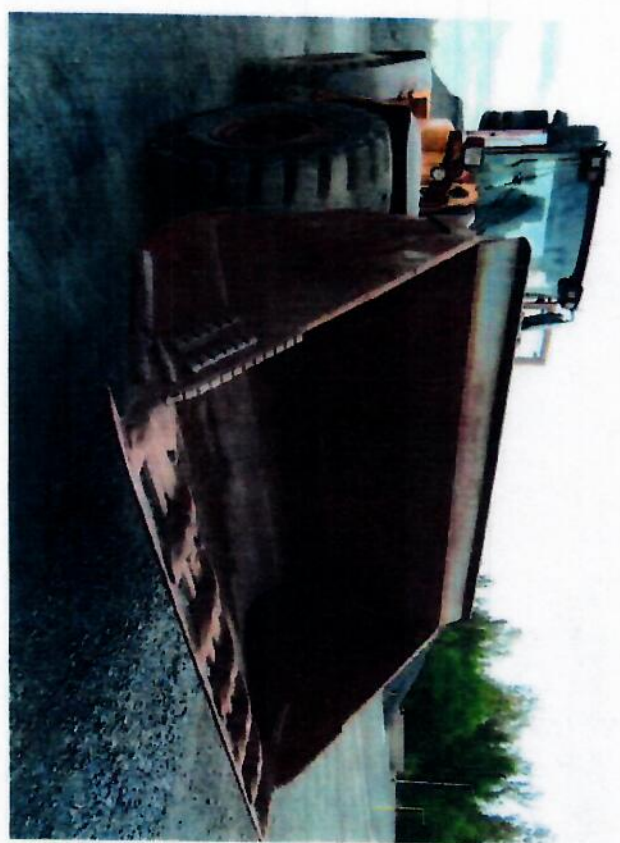


Page 2





New Proj



IMPORTANT ENGINE INFORMATION

ENGINE FAMILY	POWER HP	POWER KW	VALVE LASH (mm) IN	EX	INJ. TIMING (BTDC)
602XL07.1053	217	162	0.30	0.50	00.0
MODEL	RPM	ENGINE DISPLACEMENT LITERS	INJ. RATE (mm) (STROKE)		
DIE L6C3	2100	7.145	123.0		

THE ENGINE IS DESIGNED TO OPERATE ON DIESEL FUEL.

SEFAL NO. _____

REIN _____

MANUFACTURED BY **VOORHO**

DATE OF CONFORMITY TO **12 2006**

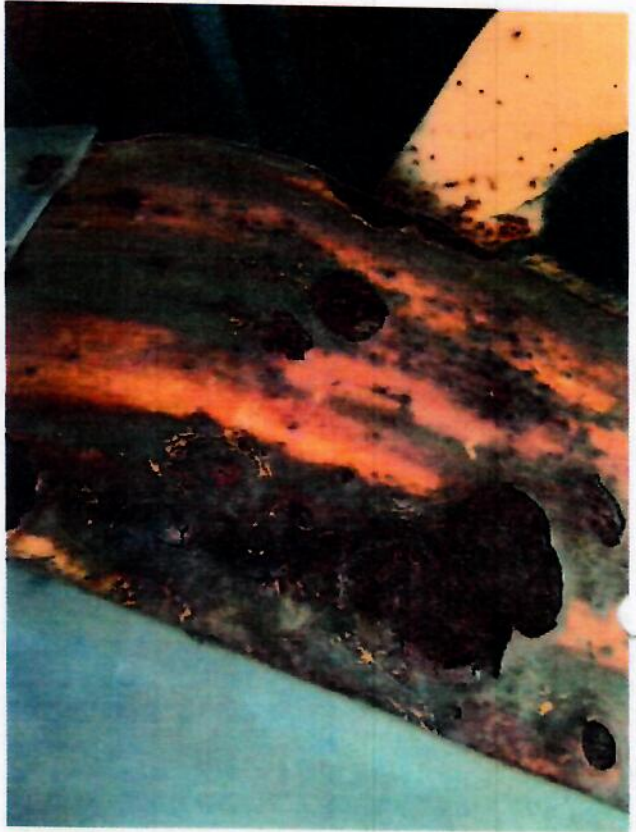
MODEL YEAR IS **2006**

Supplementary Label _____

CARB _____

14-20060114

Neuer Platz



Volvo Construction Equipment

Volvo Wheel Loaders AB
S-63185 ESKILSTUNA, SWEDEN

Model / Type **L120E**

Fahrzeug-Identifizierungsnr. **#L120EV20912#**

Zul. Gesamtgewicht kg **22000**

Zul. Achslast vorn kg **12000**

Zul. Achslast hinten kg **12000**

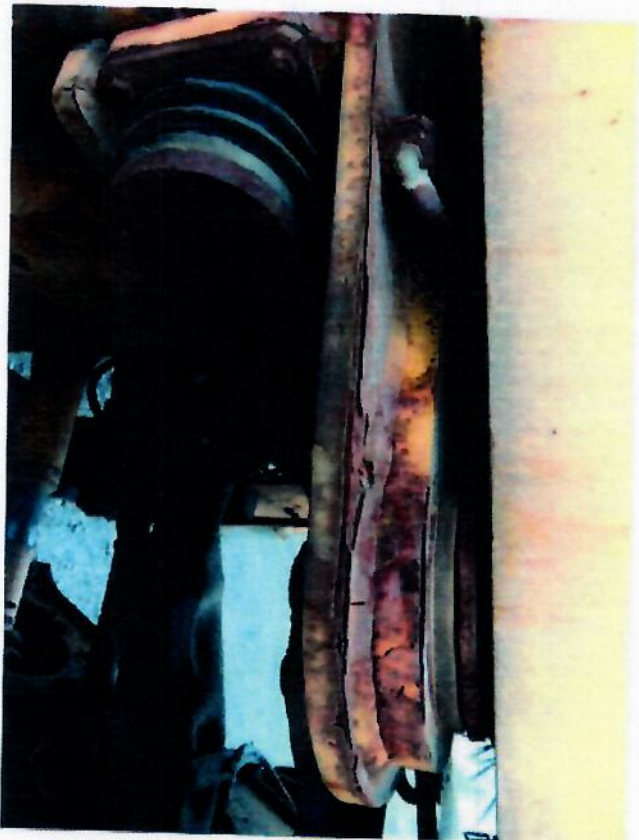
Baujahr **2007**

VOLVO

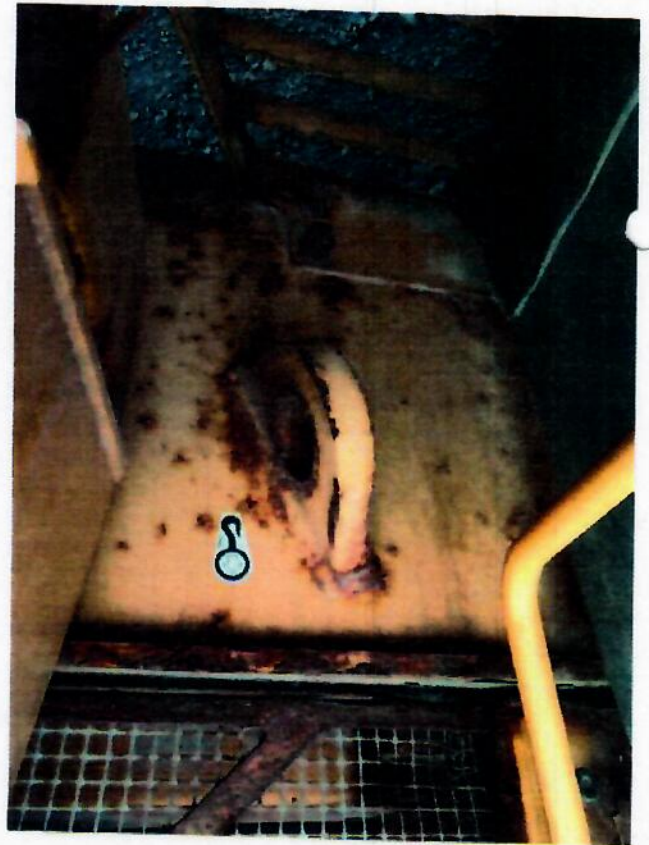
11027199



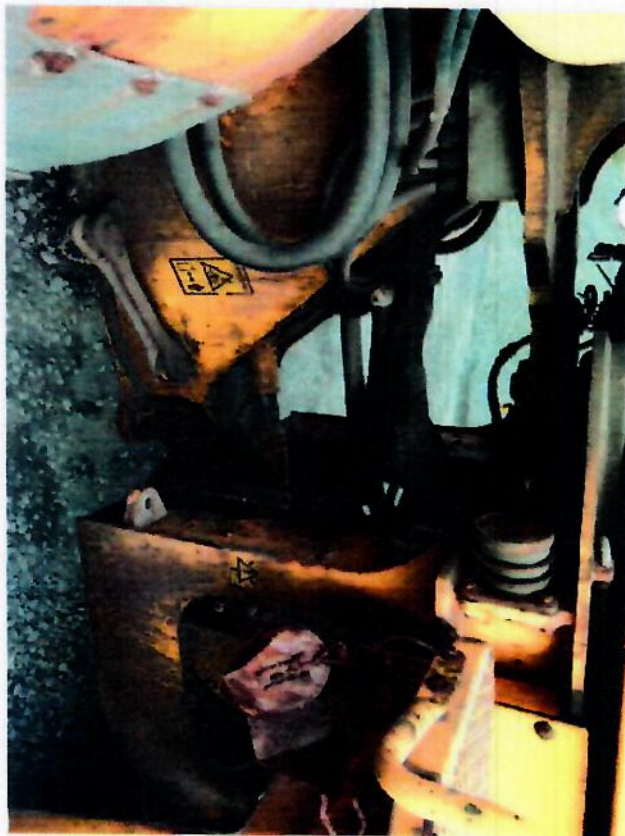
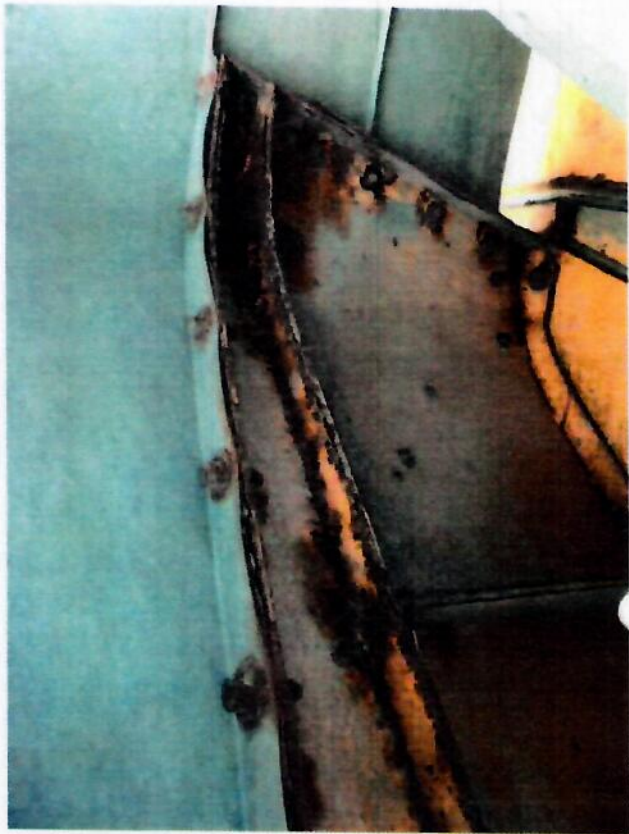
New York



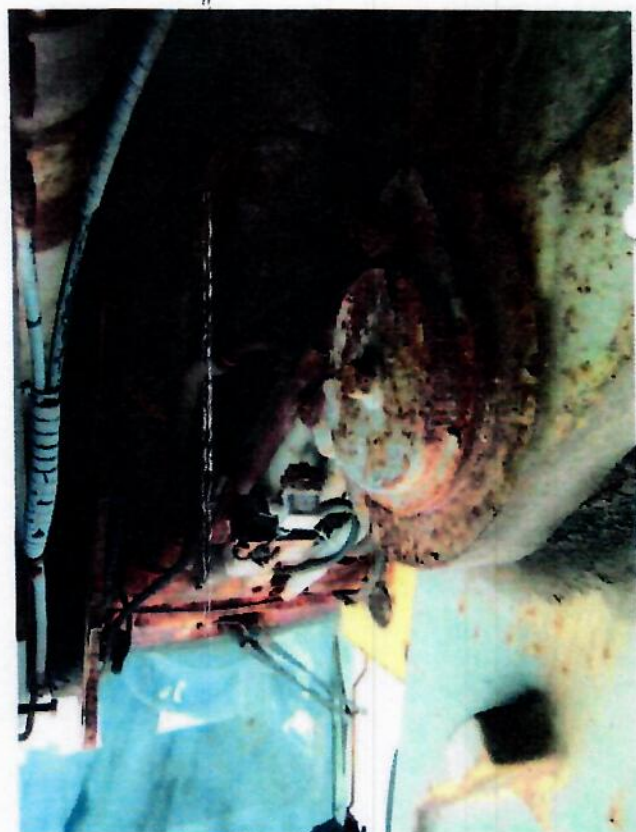
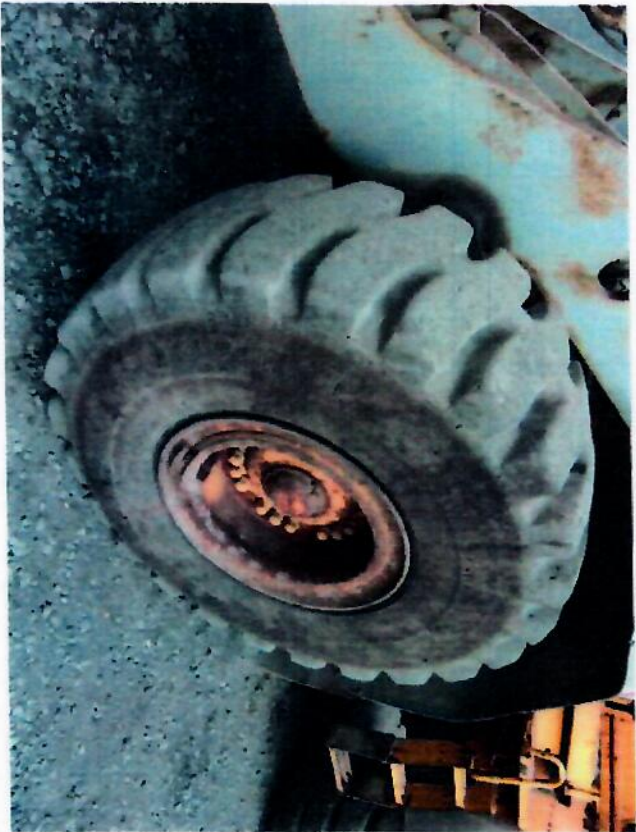
Low 200



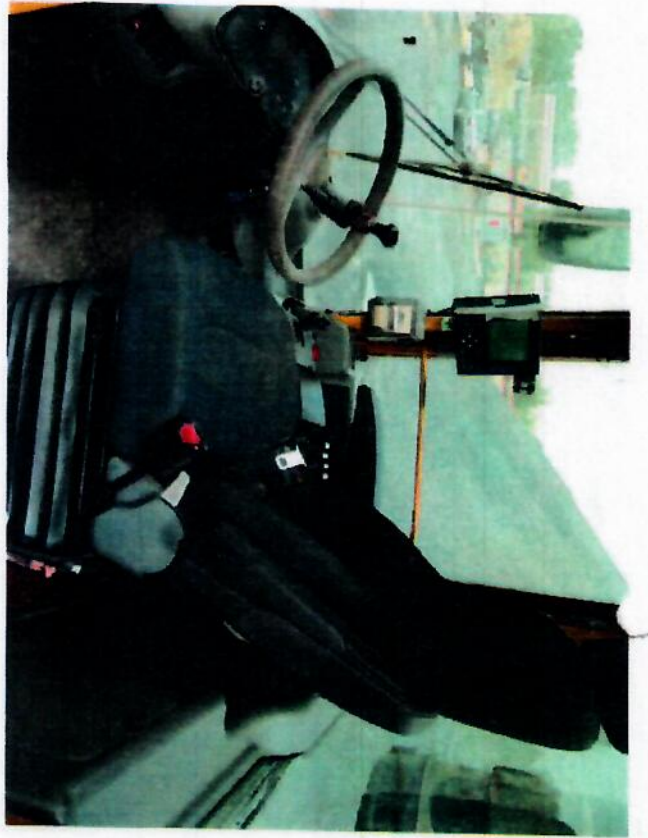
W/ P10h



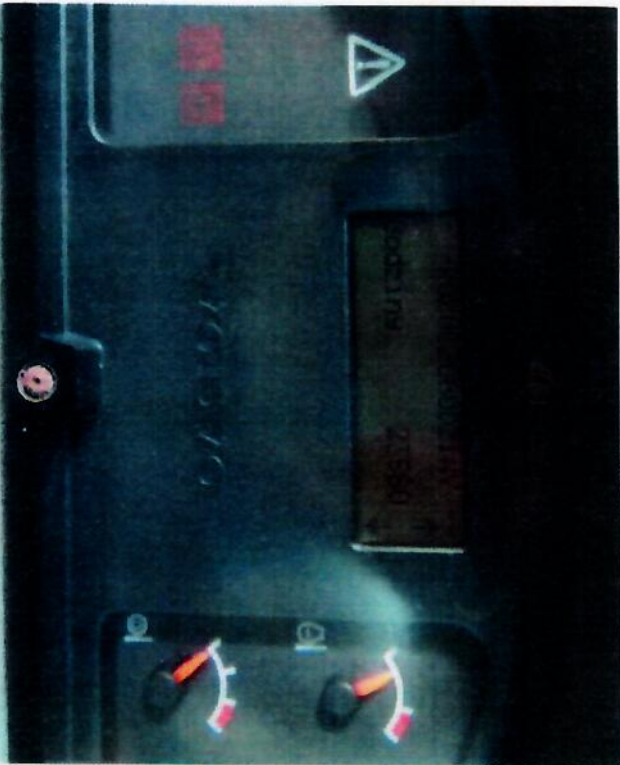
1/2 2/8 2/8



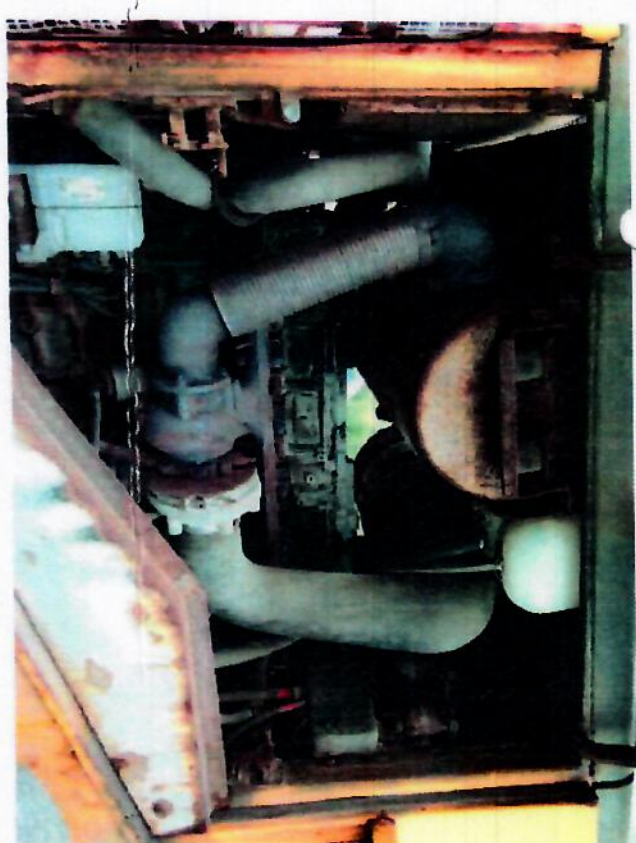
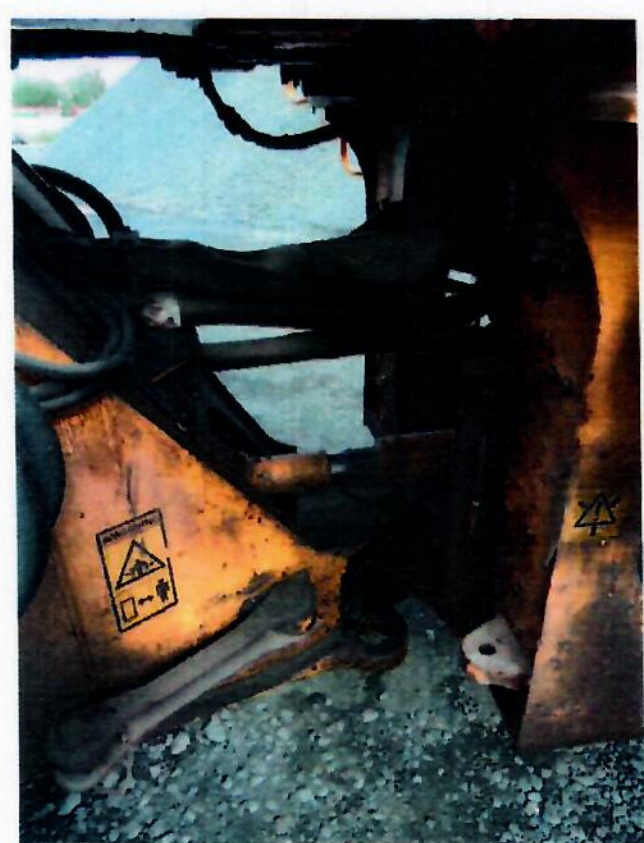
1/21/20



Luw 91 23



1st pic



New Rev

Volvo Construction Equipment
Volvo Construction Equipment AB
S-691 86 ESKILSTUNA, SWEDEN

Model / Type: L120E

Product Identification Number: *L120EV20912*


Made in Sweden

Machine mass kg	21200
Engine net power kW	179
Manufacturing year	2007
Ref. serial number	20912

VOLVO

11198271

11198270



18 July

